

## Product Installation Guidelines & Scope of Use

Version 1.1, 17 March 2025, Page 1 of 4  
Document No.: 174.21.23.03

# Vandal Resistant CP-BS Lead Safe ¼ Turn Hob Twin Mixer with 200 Upswept Spout & V/R Aerator

## PRODUCT CODES:

– 174.21.23.03



## SPECIFICATIONS

- Lead Safe™ brass construction\*
- Vandal resistant handle with locking ring to secure the handle to the spindle which may only be removed using the key provided.
- Standard with ceramic disc
- Chrome plate finish for easy cleaning and durability

**IMPORTANT:** All vandal resistant taps are tested in accordance with AS 3718 and leave our premises in good working order.

\*Our Lead Safe™ product range is compliant with the Lead Free Requirements of the NCC 2022 Vol. Three, Clause A5G4(2) and NSF/ANSI 372.  
\*\*Any flow controller incorporated in the outlet to be tightened to prevent removal by hand. As Per AS 3718.

**WARNINGS:** Special attentions to be paid on notes, photos, images, or drawings of assembly steps marked with the warning symbol.



## TECHNICAL DATA

Inlet		G ½” – Female (Flexi-hoses)
Outlet		Aerator
Headwork		Ceramic Disc
Working Pressure Range (kPa)	Min	50
	Max	500
Working Temperature Range (°C)	Min	5
	Max	80
Nominal Flow Rate (LPM)		5.03
Construction		Brass
Finish		Chrome
<b>NOTE:</b> Galvin Engineering continually strives to improve their products. Specifications may change without notice.		

## TOOLS REQUIRED

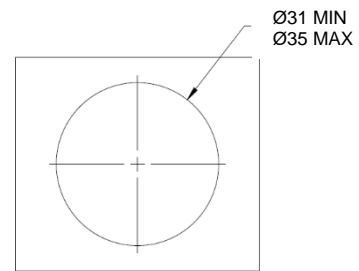
- Adjustable spanner
- Hex key
- Power drill

## PRE-INSTALLATION

- If the mounting hole does not already exist, mark out and drill the hole in the bench, as shown in the rough-in dimensions.

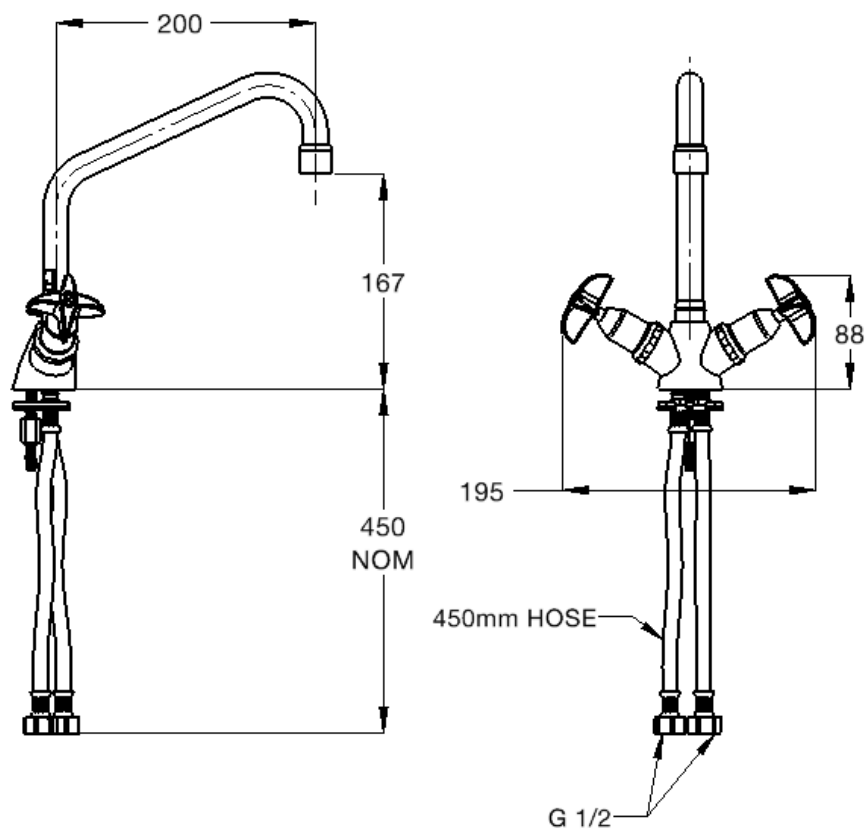


*Note: Before installation, all lines must be flushed. We recommend that a line strainer be installed prior to the tap body to eliminate any foreign material.*



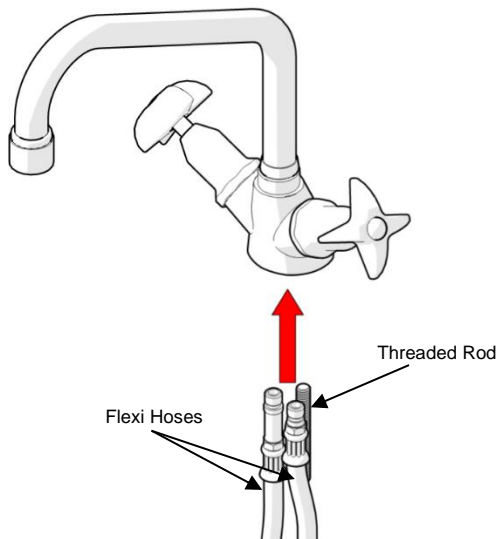
Rough-In Dimensions

## DIMENSIONS

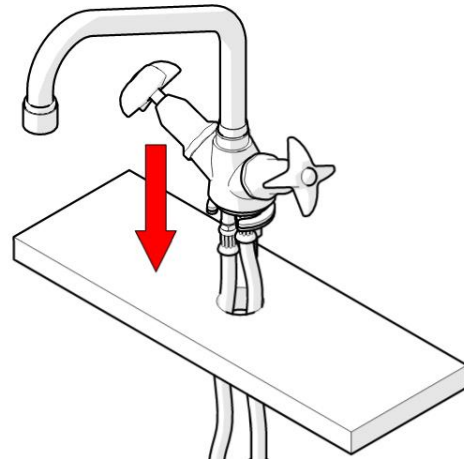


**INSTALLATION**

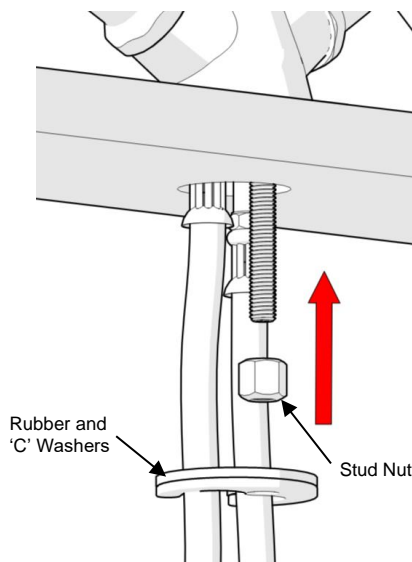
**INSTALLATION COMPLIANCE:** Galvin Engineering products must be installed in accordance with these installation instructions and in accordance with AS/NZS 3500, the PCA and your local regulatory requirements. Water and/or electrical supply conditions must also comply to the applicable national and/or state standards. Failing to comply with these provisions shall void the product warranty and may affect the performance of the product.

**1. Fit Mounting Hardware and Hoses**

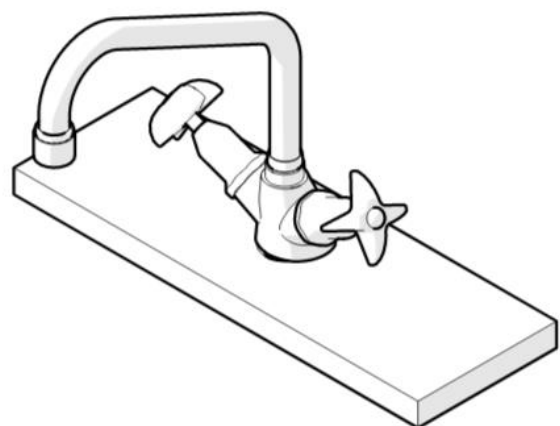
- Fit the two supplied flexi hoses into the body
- Fully screw threaded rod as shown.

**2. Fit Mixer Body**

- Fit the mixer through the drilled hole in the bench.

**3. Secure Body**

- Secure body with supplied stud nut, ensuring to use rubber and 'C' washers.

**4. Connect Water and Test**

- Connect the flexi hoses to the mains water supply
- Test the tap for leaks and correct operation.

## TROUBLESHOOTING

PROBLEM	CAUSE	RECTIFICATION
Tap is leaking	Tap incorrectly installed	Follow the installation steps above when fitting the tap.
Tap has inconsistent flow	Blocked flow regulator	Follow the instructions above to remove flow regulator from the body and check for debris. Install an inline strainer to stop further blockages.
Tap moves on bench	Insufficiently tightened	Follow the steps above in relation to tightening the installation.
Water temperature is opposite to the handle markings	Inlet hoses connected incorrectly	Switch the hoses connection on the inlets
	Inlet hoses connected to wrong isolating valves	Switch the hoses connection on the isolating valves

## WARRANTY

Galvin Engineering products are covered under our Manufacturer's Warranty. Galvin Engineering products must be installed in accordance with the installation instructions and in accordance with AS 3500 and NCC Volume Three, relevant Australian Standards and local authorities applicable to product being installed. Water and electrical supply conditions must also comply to the applicable national and/or state standards, failing to comply with these provisions may void the product warranty and affect performance of the product.

Please visit [www.galvinengineering.com.au](http://www.galvinengineering.com.au) to view the full warranty, our Installation Compliance and Maintenance & Cleaning information as well as any other additional information.